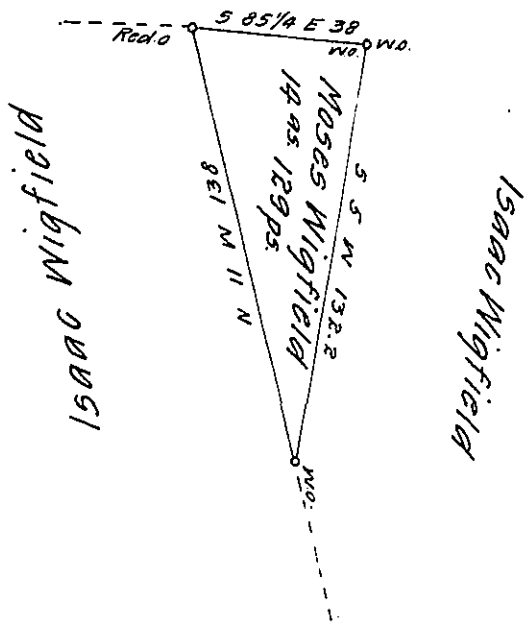


Isaac Wigfield



Situate on the East side of Martins Mountain in Southamp-
 ton township Bedford County. Containing 14 acres 129 perches
 and the usual allowance of six per cent for roads surveyed
 the 20th day of ~~April~~ ^{November} A.D. 1869 in pursuance of a warrant
 granted to Moses Wigfield dated 25th of March A.D. 1868.

Sam^l Ketterman. C.S.

To J. M. Campbell. Esqr.

S. G.

IN TESTIMONY that the above is a copy of the original remaining on file in
 the Department of Internal Affairs of Pennsylvania, made
 conformably to an Act of Assembly approved the 16th day of
 February, 1833, I have hereunto set my Hand and caused
 the Seal of said Department to be affixed at Harrisburg,
 this eleventh day of May 1908.

Henry Houck
 Secretary of Internal Affairs.